

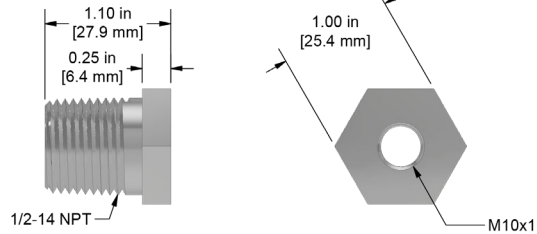
DM910 Series

Metric Mounting Bushings for
8mm Proximity Probes



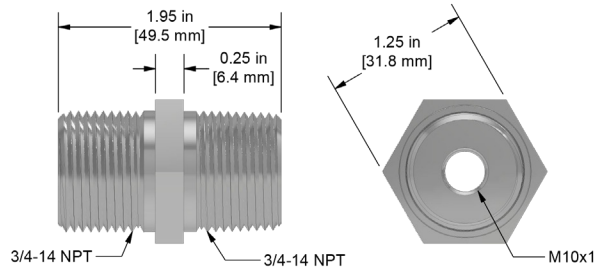
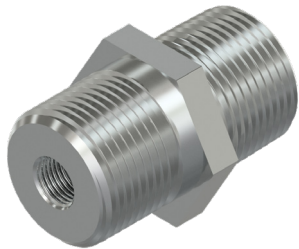
DM911-1A

316L Stainless Steel, 1/2-14 NPT Mounting Bushing with M10x1 Threaded Hole



DM914-1A

316L Stainless Steel, 3/4-14 NPT to 3/4-14 NPT Mounting Bushing with M10x1 Threaded Hole



DM915-1A

316L Stainless Steel, 1/2-14 NPT to 3/4-14 NPSM Mounting Bushing with M10x1 Threaded Hole

