

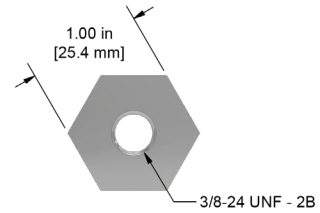
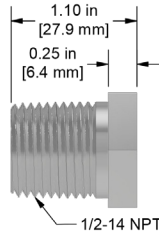
DM900 Series

Standard Mounting Bushings for
8mm Proximity Probes



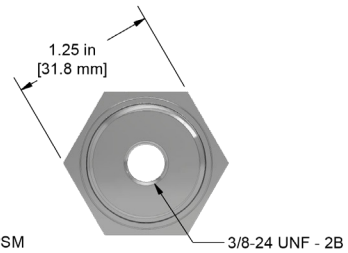
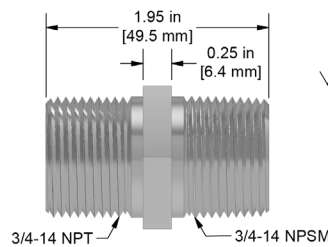
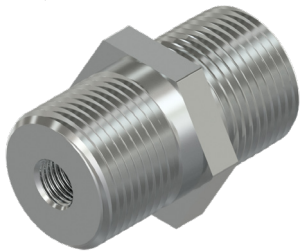
DM901-1A

316L Stainless Steel, 1/2-14 NPT Mounting Bushing with 3/8-24 Threaded Hole



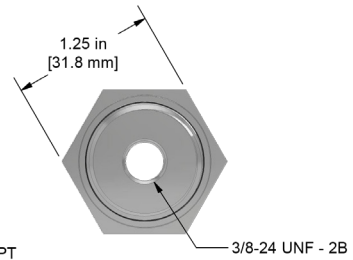
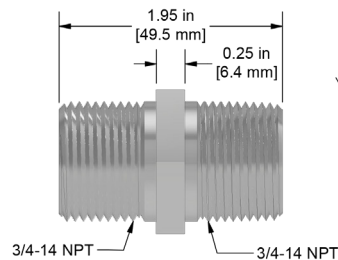
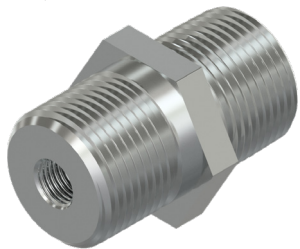
DM903-1A

316L Stainless Steel, 3/4-14 NPT to 3/4-14 NPSM Mounting Bushing with 3/8-24 Threaded Hole



DM904-1A

316L Stainless Steel, 3/4-14 NPT to 3/4-14 NPT Mounting Bushing with 3/8-24 Threaded Hole



DM905-1A

316L Stainless Steel, 1/2-14 NPT to 3/4-14 NPSM Mounting Bushing with 3/8-24 Threaded Hole

